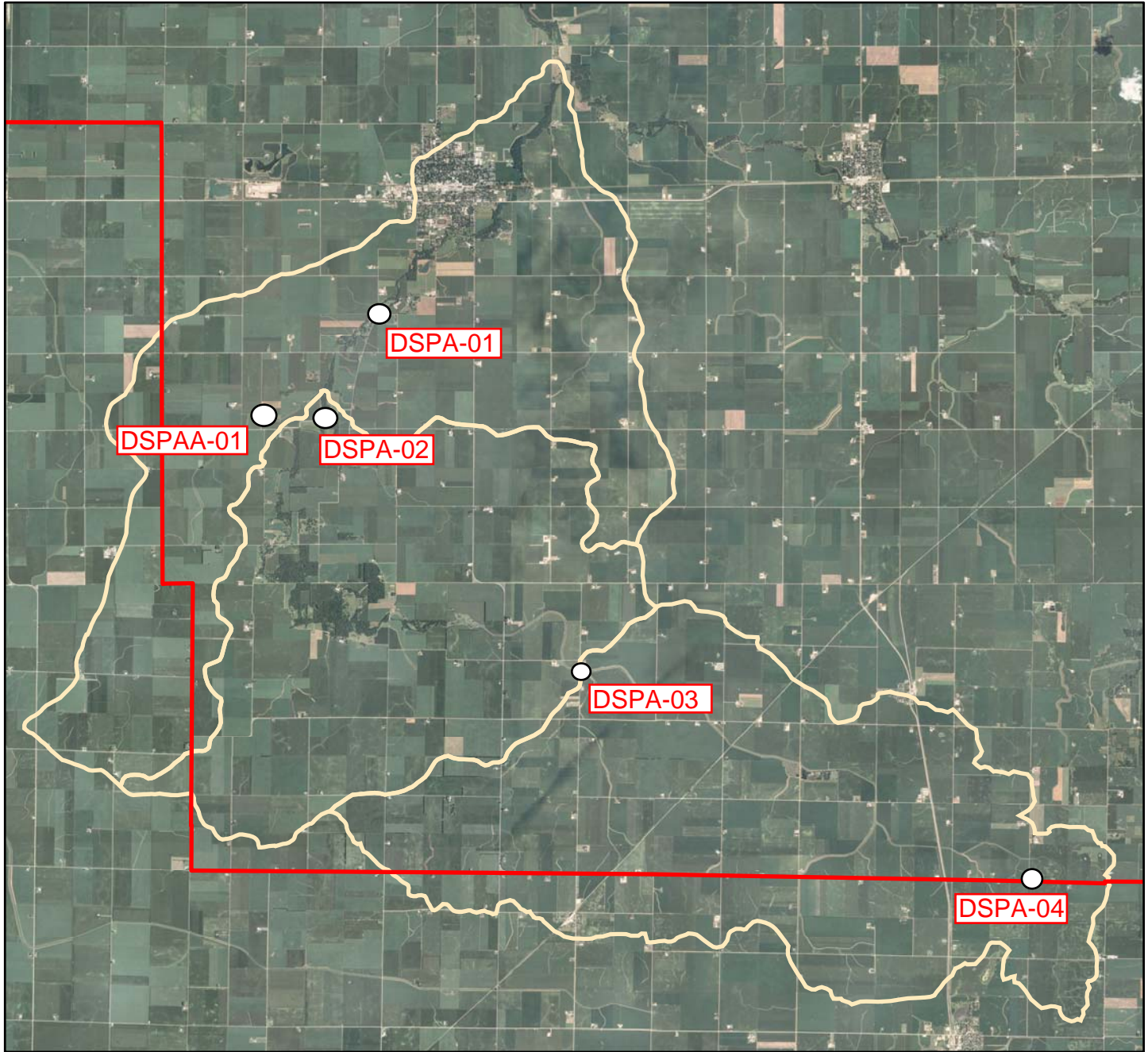


INDIAN CREEK WATERSHED

Date: 12/1/2009


District: LIVINGSTON COUNTY SOIL & WATER CONSERVATION DISTRICT


Field Office: PONTIAC SERVICE CENTER
Agency: USDA/NRCS
Assisted By: Gregory S Hinthorn
State and County: IL, LIVINGSTON




Legend



 boundary_a_il105

 huc_a_il

 Monitoring Stations

1 inch equals 10,500 feet

