

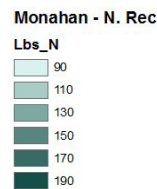
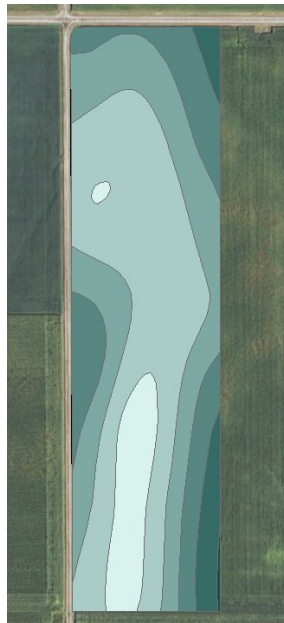
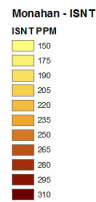


# Indian Creek

2011 Field Demonstrations



## Monahan Variable Rate Nitrogen Demo



### 4Rs

- Rate: Variable Rate N

## Discussion

This study was designed to demonstrate the benefits of variable rate application of N based on differences in soil mineralization. Based on 0 check plot data from NUE trials over half of N taken up by a corn crop comes from the soil. Through ISNT samples we can predict which areas of the field will mineralize the most nitrogen. The recommendation map then cuts back in areas with high ISNT.

- Soils in Indian Creek watershed show variability in their ability to mineralize nitrogen
- Soil mineralization is responsible for a majority of nitrogen taken up by corn